


## Viewing Distances

The selection of the correct size of sign requires careful consideration, taking factors such as location, sign height from floor level, ambient light and line of sight. Our table gives indications of maximum viewing distances, based on two levels of light at the sign face.

	Good Light 100 Lux	Poor Light 50 Lux
 300mm x 100mm	11.9m	6.6m
 450mm x 150mm	20.4m	11.4m
 600mm x 200mm	27.2m	15.2m

## Fire Doors

Every fire door should have a **"Fire door keep shut"** sign fitted and where doors can be used from either side a sign is required on both sides.



## Emergency Exits



On the outside of the building install **"Fire exit keep clear"** signs.

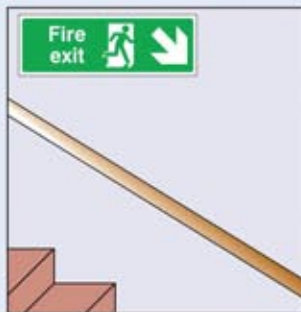


**"Push bar or push pad to open"** signs should be fitted to each emergency exit door which incorporates a quick release mechanism.

## Sign Location Guide

### Directional Signs to Final Exit

These signs are used to direct occupants to the quickest or safest route to exit the building.

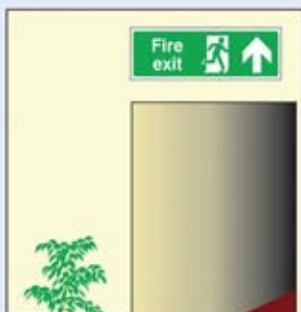


**Down and Right from here**



**Right From here**

Signs sited on walls should be mounted between 1.7m and 2.0m from floor level, measured to the base of the sign.

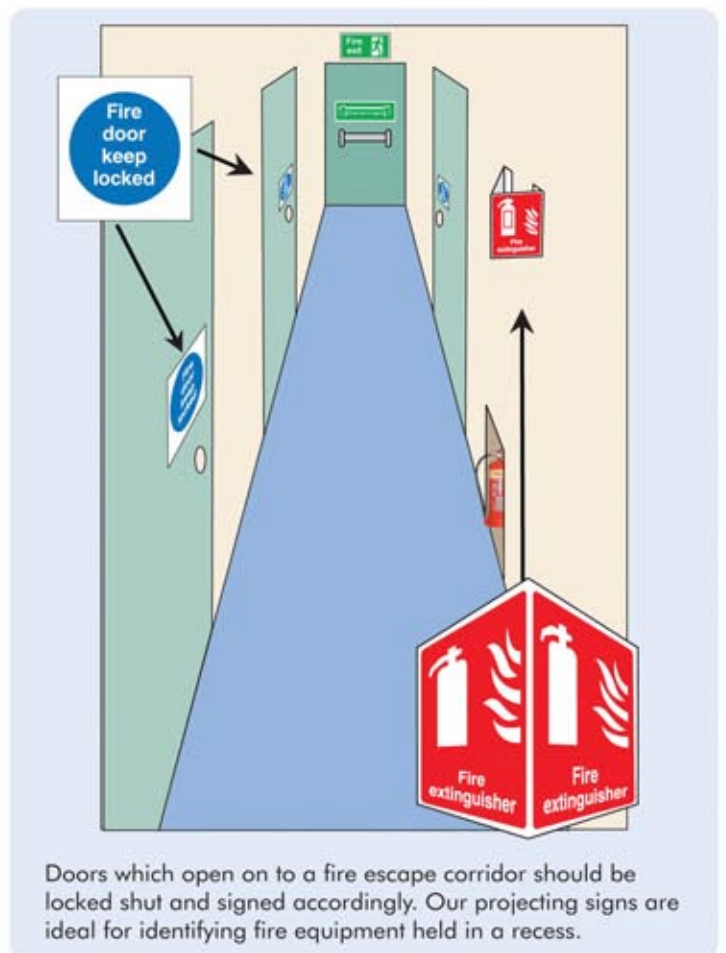


**Straight on from here**



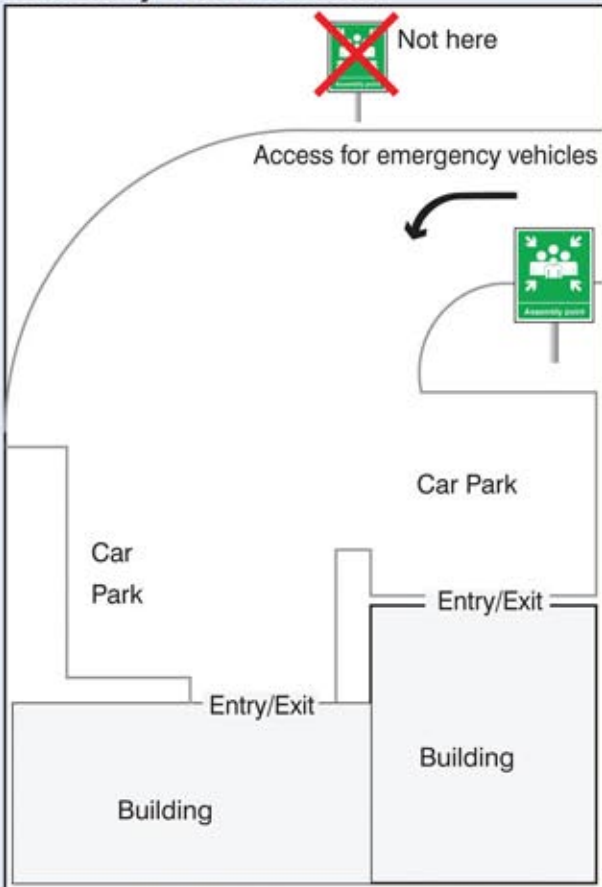
**Final Exit**

Signs above doors should be mounted between 2m and 2.5m from floor level, measured to the base of the sign.



Doors which open on to a fire escape corridor should be locked shut and signed accordingly. Our projecting signs are ideal for identifying fire equipment held in a recess.

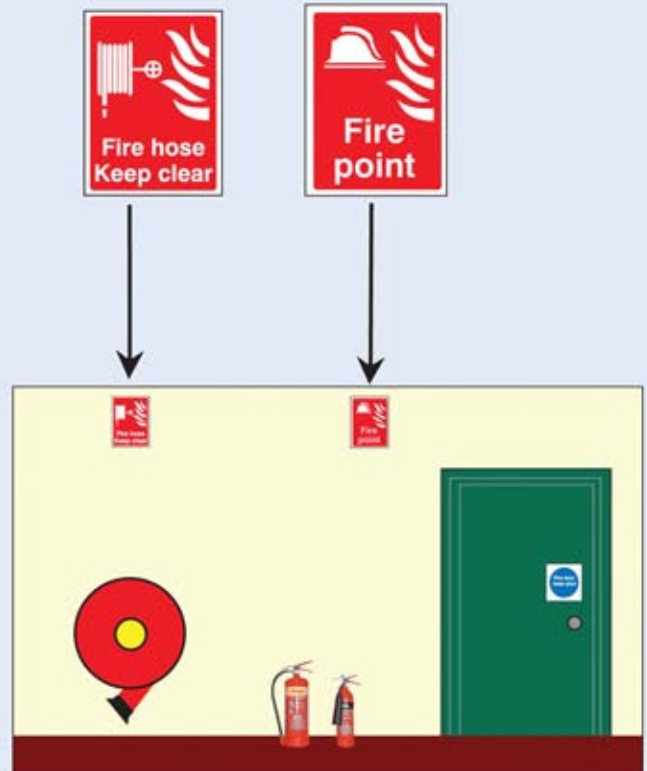
## Assembly Point Location



A common mistake in the siting of an assembly point. Locate the assembly point away from the route taken by emergency vehicles.

site above each fire hose

site above groups of fire equipment



## Extinguisher Signs

Site above/beside each fire extinguisher to explain what that particular extinguisher is used for.

## Fire Equipment Location Signs

Site signs above fire equipment at a height of between 1.7 and 2.0m from ground level to the base of the sign. This will ensure that signs are within the normal field of vision and equipment is easily located in the event of an emergency.

site above each call point

site next to each call point

site above extinguisher



e.g Foam Spray

e.g CO2

